

# Anatomical Models Catalogue



REPRESENTANTE PARA ECUADOR



**SOCIEDAD RADIOTÉCNICA  
ECUATORIANA**

[www.socradec.com](http://www.socradec.com)

[socradec@socradec.com](mailto:socradec@socradec.com)

+593 2 225-2731



**MEDICAL·X**

ADVANCING SIMULATION

Version : 02.2025

# Directory

Skeletal Models.....	1
Human Spine Models .....	6
Pelvic Models .....	8
Skull Models .....	10
Joint Models .....	14
Cuttable Solid Foam Bone .....	17
Human Muscular Models .....	19
Human Torso Models .....	20
Head Anatomical Models .....	21
Eyes Models .....	23
Nervous System Models .....	23
Ear Models .....	24
Dental & Teeth Pathology.....	25
Respiratory System .....	27
Digestive System .....	29
Urinary System .....	30
Reproductive System .....	32
Pregnancy Models .....	33
Endocrine Models .....	33
Microscopic Cellular Models.....	34
Plant Models .....	36
Animal Skeleton Models .....	37



**MEDICAL-X**  
ADVANCING SIMULATION

## Skeletal Models



**MT-106B**

Full-size human skeleton, standing 170 cm tall and weighing approximately 9.0 kg, with detailed spinal nerves, vertebral artery, and ligaments on the left side of the body. Comes with a 5-star base for stability.



**MT-109B**

Full-size human skeleton, standing 170 cm tall and weighing approximately 9.0 kg, with numbered origins and insertions of muscles. Comes with a 5-star base for stability.



**MT-110B**

Full-size human skeleton, standing 170 cm tall and weighing approximately 9.0 kg, with numbered origins and insertions of muscles and joint ligaments. Comes with a 5-star base for stability.



**MT-111B**

Full-size human skeleton with articulated spine, standing 170 cm tall and weighing approximately 9.0 kg, with numbered origins and insertions of muscles and joint ligaments. Comes with a 5-star base for stability.



**MT-101B**

Full-size human skeleton model, standing 170 cm tall and weighing approximately 9.0 kg, comes with a 5-star base for stability and hanging support.





**MEDICAL-X**  
ADVANCING SIMULATION

## Skeletal Models



**MT-104B**

Disarticulated Right-Half Full Size Human Skeleton, W/ 3 Part Skull, 170 cm



**MT-103B**

Disarticulated Full Size Human Skeleton, W/ 3 Part Skull, 170 cm Life Size



**MT-105B**

Full-size human skeleton, standing 170 cm tall and weighing approximately 9.0 kg, with detailed spinal nerves and vertebral artery. Comes with a 5-star base for stability.



**MT-100B**

Full-size human skeleton model, standing 170 cm tall and weighing approximately 9.0 kg, comes with a 5-star base for stability.



**MT-121B**

Human skeleton miniature, standing 21 cm tall. Comes with a fixed base for stability.



**MT-120B**

Human skeleton miniature, standing 45 cm tall. Comes with a fixed base for stability.



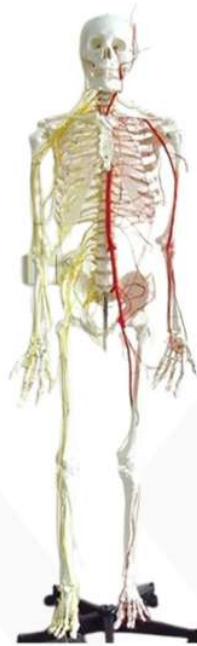
**MEDICAL-X**  
ADVANCING SIMULATION

## Skeletal Models



**MT-163A**

Full-size, flexible spinal column model with rib cage measures 85 cm and features a detailed representation of the skull base, vertebral artery, spinal cord, emerging spinal nerves, pelvis, and a fully movable rib cage. The model is supported by a fixed base for optimal stability.



**MT-107B**

Full-size human skeleton, standing 170 cm tall and weighing approximately 9.0 kg, with detailed nerves and blood vessels. Comes with a 5-star base for stability.



**MT-123B**

Infant human skeleton miniature with conjoined twin skulls, standing 30 cm tall. Comes with a fixed base for stability.



**MT-122B**

Infant human skeleton miniature, standing 30 cm tall. Comes with a fixed base for stability.



**MT-102B**

Half-size human skeleton model, standing 85 cm tall and weighing approximately 1.2 kg, comes with a fixed base for stability.



**MT-112B**

Half-size human skeleton, standing 85 cm tall and weighing approximately 1.2 kg, with detailed spinal nerves and vertebral artery. Comes with a fixed base for stability.



**MEDICAL-X**  
ADVANCING SIMULATION

## Skeletal Models



**MT-114B**

Half-size human skeleton, standing 85 cm tall and weighing approximately 1.2 kg, with detailed nerves and sternum. Comes with a fixed base for stability.



**MT-116B**

Half-size human skeleton, standing 85 cm tall and weighing approximately 1.2 kg, with detailed nerves, and numbered origins and insertions of muscles. Comes with a fixed base for stability.



**MT-117B**

Half-size human skeleton, standing 85 cm tall and weighing approximately 1.2 kg, with numbered origins and insertions of muscles and joint ligaments. Comes with a fixed base for stability.



**MT-115B**

Half-size human skeleton, standing 85 cm tall and weighing approximately 1.2 kg, with detailed nerves, blood vessels and heart. Comes with a fixed base for stability.



**MT-113B**

Half-size human skeleton with articulated spine, standing 85 cm tall and weighing approximately 1.2 kg, with detailed spinal nerves and vertebral artery. Comes with a fixed base and hanging support.



**MT-119B**

Half-size human skeleton with articulated spine, standing 85 cm tall and weighing approximately 1.2 kg, with numbered origins and insertions of muscles and joint ligaments. Comes with a fixed base and hanging support.





**MEDICAL-X**  
ADVANCING SIMULATION

## Skeletal Models



**MT-118B**

Half-size human skeleton with articulated spine, standing 85 cm tall and weighing approximately 1.2 kg, with detailed nerves, and numbered origins and insertions of muscles. Comes with a fixed base and hanging support.



**MT-182A**

Cervical Spinal Column W/ Occipital Bone, Nerve and Vertebral Artery, Life Size



**MT-183A**

Cervical Spinal Column W/ Occipital Bone, Brainstem, Nerve and Vertebral Artery, Life Size



**MT-177A**

Lumbar Model, W/Magnetic Mounted Sacrum Crest



**MT-176A**

Full-size flexible thoracic spine model, providing a detailed representation of Th1 to Th12 vertebrae, spinal cord and emerging spinal nerves. Comes with a fixed base for stability.



**MT-179A**

7 Typical Vertebrae, Mounted On Base



**MEDICAL-X**  
ADVANCING SIMULATION

## Human Spine Models



**MT-162A**

Full-size, flexible spinal column model, measuring 85 cm in length, includes the occipital bone, cervical, thoracic, and lumbar vertebrae, sacrum, coccyx, and male pelvis. It features detailed representations of the vertebral arteries, spinal nerves, and a prolapsed L3-L4 intervertebral disc. The model is supported by a fixed base or optimal stability.



**MT-168A**

Didactic Flexible Spine W/ Pelvis and Nerves, 85 cm, Style B



**MT-164A**

Full-size, flexible spinal column model, measuring 85 cm in length, includes the occipital bone, cervical, thoracic, and lumbar vertebrae, sacrum, coccyx, and male pelvis with femur heads. It features detailed representations of the vertebral arteries, spinal nerves, and a prolapsed L3-L4 intervertebral disc. The model is supported by a fixed base for optimal stability.



**MT-170A**

85 cm Flexible Spine W/ Femur Heads and Painted Muscles



**MT-169A**

Deluxe Didactic Flexible Spine W/ Femur Heads, Style B, 85 cm



**MT-171A**

Deluxe Didactic Flexible Spine W/ Femur Heads and Painted Muscles, Style B, 85 cm, W/ Detachable Femur Heads & Pelvic Bone





MEDICAL-X  
ADVANCING SIMULATION

## Human Spine Models



MT-167A

Didactic Colored Flexible Spine W/ Detachable Pelvis and Femur Heads, 85 cm



MT-168A

Didactic Flexible Spine W/ Pelvis and Nerves, 85 cm, Style B



MT-166A

Deluxe Flexible Spine W/ Femur Heads, W/Magnetic Mounted Sacrum Crest, 85 cm



MT-172A

Desktop Spine Model W/ Femur Heads, 45 cm



MT-173A

Half-size flexible spinal column model with painted individual bones. Provides a detailed representation the vertebrae, skull base segment, pelvis, intervertebral discs, vertebral artery, and spinal nerves. Comes with a fixed base for stability.



MT-174A

Half-size flexible spinal column model, measuring 45 cm in length. Provides a detailed representation of all bones, intervertebral discs, spinal nerves and the vertebral artery. Comes with comes with a hanging support, for easy viewing and demonstration.



MEDICAL-X  
ADVANCING SIMULATION

## Pelvic Models



MT-175A

Half-size flexible spinal column model with didactic colors, measuring 45 cm in length. Provides a detailed representation of all bones, intervertebral discs, spinal nerves and the vertebral artery. Comes with a hanging support, for easy viewing and demonstration.



MT-189P

Male Pelvic Skeleton



MT-193P

Female Pelvic Skeleton



MT-192P

Male Pelvis W/ Lumbar Vertebrae (L1-L5) and Femur Heads



MT-192P

Sacrum and Coccyx Model



MT-197P

Female Pelvis W/ 4th and 5th Lumbar Vertebrae



MEDICAL-X  
ADVANCING SIMULATION

## Pelvic Models



MT-191P

Male Pelvis W/ 4th and 5th Lumbar Vertebrae and Femur Heads



MT-198P

Female Pelvis on Elastic W/ 4th and 5th Lumbar Vertebrae and Femur Heads



MT-199P

Female Pelvis on Elastic W/ 4th and 5th Lumbar Vertebrae and Femur Heads



MT-187A

Occipital Plate W/ Atlantoaxial and Pivot, Life Size



MT-188A

2x Magnified Occipital Bone Model W/ Atlantoaxial and Pivot



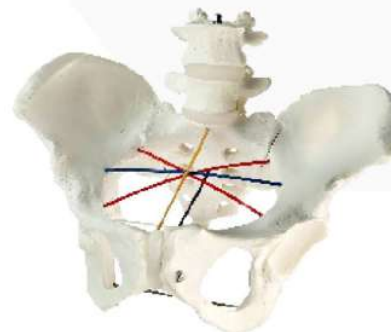
MT-191P

Miniature Female Pelvis on Elastic, 1/2 Life Size



MT-190P

Male Pelvis W/ Lumbar Vertebrae (L1-L5) and Femur Heads



MT-196P

Female Pelvic Measurement Model





**MEDICAL-X**  
ADVANCING SIMULATION

## Skull Models



**MT-124S**

3-part full-size human skull model, easily disassembled into the skull cap, skull base, and mandible. The skull cap and base are aligned using metal pins and secured with strong magnets.



**MT-387-MX**

37-part full-size human skull model with facial and masticatory musculature, detailing individual anatomical structures, bones, and muscles.



**MT-125S**

3-part full-size human skull model with numbered sections and detailed suture, easily disassembled into the skull cap, skull base, and mandible. The skull cap and base are aligned using metal pins and secured with strong magnets.



**MT-131S**

3-part full-size human skull model, with numbered origins and insertions of muscles, easily disassembled into the skull cap, skull base, and mandible.



**MT-129S**

3-part full-size human skull model, with painted individual bones, easily disassembled into the skull cap, skull base, and mandible. The skull cap and base are aligned using metal pins and secured with strong magnets.



**MT-127S**

3-part full-size human skull model, with detailed endocranial blood vessels, easily disassembled into the skull cap, skull base, and mandible. The skull cap and base are aligned using metal pins and secured with strong magnets.



**MT-133S**

Human Skull W/Bone Suture, Detachable Jaw and Teeth, Life Size, 8 Parts



**MT-132S**

3-part full-size human skull model, with painted individual bones and detailed origins and insertions of muscles, easily disassembled into the skull cap, skull base, and mandible.



**MEDICAL-X**  
ADVANCING SIMULATION

## Skull Models



**MT-148S**

New-Born Baby Skull Model W/ Movable Lower Jaw, Life Size, 2 Parts



**MT-147S**

Child Skull, W/ Removable Skull Cap Showing Endocranial Structure, 5-Year-Old, 3 Parts, Life Size



**MT-251N**

Transparent Human Skull, W/Brain, Life Size, 11 Parts



**MT-139S**

Transparent Human Skull, Life Size, 3 Parts



**MT-253N**

8-part full-size human skull model with brain, ideal for educational studies of brain and skull anatomy. It features hidden magnets for easy reassembly.



**MT-254N**

Skull W/Brain and Arteries, Life Size, 11 Parts



**MT-134S**

3-part full-size human skull model with cervical spine, easily disassembled into the skull cap, skull base, and mandible.



**MT-135S**

3-part full-size human skull model with cervical spine, features numbered sections and detailed suture. Easily disassembled into the skull cap, skull base, and mandible. The skull cap and base are aligned using metal pins and secured with strong magnets.





MEDICAL-X  
ADVANCING SIMULATION

## Skull Models



**MT-130S**

3-part half-size human skull model, easily disassembled into the skull cap, skull base, and mandible.



**MT-137S**

3-part full-size human skull model with cervical spine, features painted individual bones on the left side and detailed muscle origins and insertions on the right. Easily disassembled into the skull cap, skull base, and mandible.



**MT-252N**

8-part full-size human skull model including numbered sections and detailed sutures on the cervical spine. The brain is divided into the temporal, occipital, frontal, and parietal lobes, cerebellum (2) and brainstem (2).



**MT-384-MX**

11-part full-size human skull model with masticatory musculature, providing detailed representation of chewing movements, bones, and muscles.



**MT-142S**

Didactic Color 22 Parts Human Skull Model, Life Size, 22 Parts



**MT-254N**

Human Skull Model, Bone Color, Life Size, 22 Parts



**MT-144S**

Didactic Color Beauchene Human Skull Model, Life Size, Exploded Skull Model



**MT-143S**

Human Disarticulated Skull Model, Life Size, 22 Parts





**MEDICAL-X**  
ADVANCING SIMULATION

## Skull Models



**MT-145S**

Exploded Human Skull Model , Didactic Painted, 1/2 Life Size, 15 Parts



**MT-146S**

Exploded Human Skull Model , Bone Color, 1/2 Life Size, 15 Parts



**MT-141S**

Full-size Disarticulated Human Skull with 22 separate parts, easily assembled and disassembled using magnetic closures.



**MT-149S**

Full-size, one-piece anatomical model of the Sphenoid bone



**MT-150S**

Full-size, one-piece anatomical model of the Temporal bone



**MT-151S**

Full-size, one-piece anatomical model of the Occipital bone



**MT-152S**

Full-size, one-piece anatomical model of the Ethmoid bone



**MEDICAL-X**  
ADVANCING SIMULATION

## Joint Models



**MT-194U**

Arm Skeleton W/ Scapula and Clavicle,  
Articulated, Life Size



**MT-202U**

Hand Skeleton W/ Portions of Ulna and Radius,  
Articulated, Life Size



**MT-208L**

Leg Skeleton W/ Hip Bone, Articulated, Life Size



**MT-210L**

Leg Skeleton W/ Hip Bone and Ligament,  
Articulated, Life Size, on Hanging Stand



**MT-195U**

Upper Limb Bone Model W/O Scapula



**MT-209L**

Lower Limb Bone Model W/O Pelvic



**MT-200U**

Arm Skeleton W/ Scapula and Clavicle, Life Size,  
Articulated, on Hanging Stand



**MEDICAL-X**  
ADVANCING SIMULATION

## Joint Models



**MT-203U**

Hand Skeleton W/ Portions of Ulna and Radius,  
Wire Mounted, Life Size



**MT-204U**

Hand Skeleton W/ Ligament and Portions of  
Ulna and Radius, Wire Mounted, Life Size



**MT-217L**

Foot Skeleton W/ Portion of Tibia Fibula,  
W/ Ligament, Life Size



**MT-215L**

Foot Skeleton W/ Portion of Tibia and Fibula,  
Wire Mounted, Life Size, W/Movable Ankle



**MT-205U**

Hand Skeleton W/ Painted Muscle and Portions  
of Ulna and Radius, Wire Mounted, Life Size



**MT-216L**

Foot Skeleton W/ Portion of Tibia Fibula and  
Painted Muscle Insertions & Origins, Life Size,  
W/Movable Ankle





**MEDICAL-X**  
ADVANCING SIMULATION

## Joint Models



**MT-198U**

Shoulder Joint Model W/ Functional Ligaments,  
Life Size



**MT-201U**

Elbow Joint Model W/ Functional Ligaments,  
Life Size



**MT-211L**

Hip Joint W/ Functional Ligaments, Life Size



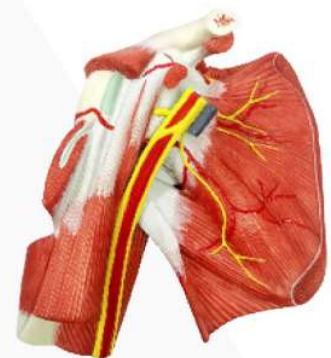
**MT-214L**

Knee Joint W/ Functional Ligaments, Life Size



**MT-220L**

Miniature Hip, Elbow, Shoulder and Knee Joint Set,  
1/2 Life Size, 4 Parts



**MT-394-MX**

Model of Shoulder W/ Muscle Girdle and  
Vessel & Nerves, Life Size



**MEDICAL-X**  
ADVANCING SIMULATION

## Cuttable Solid Foam Bone



**MT-196U**

Scapula W/ Upper Limb, Cuttable Solid Foam Bone For Surgical Operation Practice, Left, Life Size



**MT-197U**

Shoulder Joint, Cuttable Solid Foam Bone For Surgical Operation Practice, Left, Life Size



**MT-221C**

Ulna and Radius, Cuttable Solid Foam Bone For Surgical Operation Practice, Right, Life Size



**MT-224C**

Tibia, Cuttable Solid Foam Bone For Surgical Operation Practice, Life Size



**MT-222C**

Ulna Preoperative Practical Human Skeletal Model, Life Size, Solid Foam



**MT-223C**

Radius, Cuttable Solid Foam Bone For Surgical Operation Practice, Life Size



**MT-128S**

Full-size, one-piece human skull model, crafted from solid foam for surgical practice



**MT-180A**

Cervical Spinal Column W/ Occipital Plate, Cuttable Solid Foam Bone For Surgical Operation Practice, Life Size



**MT-181A**

Cervical Spinal Column, Cuttable Solid Foam Bone For Surgical Operation Practice, Life Size



**MEDICAL-X**  
ADVANCING SIMULATION

## Cuttable Solid Foam Bone



**MT-227C**

Human Femur, Cuttable Solid Foam Bone For Surgical Operation Practice, Life Size



**MT-225C**

Human Tibia, Cuttable Solid Foam Bone For Surgical Operation Practice, Life Size



**MT-226C**

Human Fibula, Cuttable Solid Foam Bone For Surgical Operation Practice, Life Size



**MT-228C**

Hipbone W/ Femur, Cuttable Solid Foam Bone For Surgical Operation Practice, Life Size



**MT-229C**

Human Femur W/ Tibia, Cuttable Solid Foam Bone For Surgical Operation Practice, Life Size



**MT-193P**

Pelvis with Removable Legs and Movable SI Joints and Foot, Female, Cuttable Solid Foam Bone For Surgical Operation Practice, Life Size



**MT-190P**

Lumbar Vertebrae W/ Sacrum and Pelvis, Cuttable Solid Foam Bone For Surgical Operation Practice, Life Size



**MT-178A**

Lumbar Vertebrae W/ Sacrum, Cuttable Solid Foam Bone For Surgical Operation Practice, Life Size



**MT-195P**

Pelvis with Movable SI Joints, Full Female, Cuttable Solid Foam Bone For Surgical Operation Practice, Life Size





**MEDICAL-X**  
ADVANCING SIMULATION

## Human Muscular Models



**MT-392-MX**

170 cm Muscular Figure W/ Internal Organs,  
Life Size, 27 Parts



**MT-391-MX**

50 cm Didactic Muscular Figure,  
1/4 Life Size, 1 Part



**MT-397-MX**

Foot Anatomy Model W/ Muscles, Ligaments,  
Nerves and Arteries, Life Size, 9 Part



**MT-396-MX**

Muscular Leg Model, Open Knee Joint Section  
to Show Interior Structure, 14 Parts, Life Size



**MT-395-MX**

Hand Anatomy Model, W/ Muscles, Ligaments,  
Nerves and Arteries, Life Size, 7 Part



**MT-238H**

Horizontal Section of the Head at the plane of the  
Orbit, Life Size, 1 Part



**MT-239H**

Anatomical Section Model of the Head at the  
plane of the Ethmoid Sinus, Life Size, 1 Part



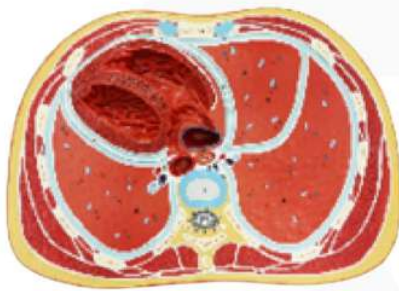
**MT-240H**

Anatomical Section Model of the Head at the  
plane of the Maxillary Sinus, Life Size, 1 Part



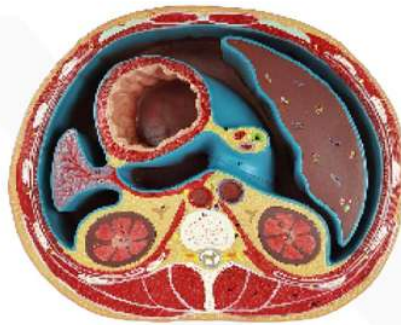
**MEDICAL-X**  
ADVANCING SIMULATION

## Human Torso Models



**MT-346Z**

Schematic Cross Section Through Abdomen [T12], Life Size, 1 Part



**MT-347Z**

Schematic Cross Section Through Thorax [T8], Life Size, 1 Part



**MT-313T**

Desktop Human Body Model, 28 cm, 16 Parts



**MT-311T**

Half Size Human Torso Model Dual-Sex, 50 cm, 16 Parts



**MT-309T**

Torso Sexless Open Back, 85 cm, 17 Parts







**MEDICAL-X**  
ADVANCING SIMULATION

## Head Anatomical Models



**MT-385-MX**

Half Skull W/ Masticatory Muscle, Life Size,  
4 Parts



**MT-386-MX**

Half Skull W/ Masticatory Muscle and Brain,  
Life Size, 5 Parts



**MT-388-MX**

Head and Neck Musculature Model Dissected  
Along the Sagittal Plane , Life Size, 2 Parts



**MT-389-MX**

Head and Neck and Thoracic Region  
Musculature, Life Size, 1 Part



**MT-245H**

Arteries of Head, Life Size, 1 Part



**MT-247H**

Nerves of Head, Life Size, 1 Part



**MT-246H**

Veins of Head, Life Size, 1 Part





**MEDICAL-X**  
ADVANCING SIMULATION

## Head Anatomical Models



**MT-232H**

Head Anatomical Model, Life Size, 4 Parts



**MT-248H**

Cranial and Autonomic Nerves,  
2.5x Life Size, 2 Parts



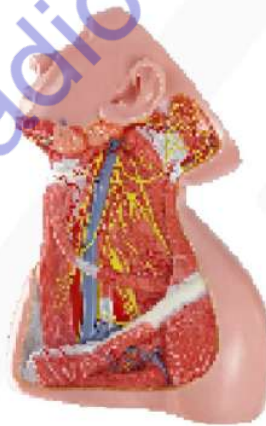
**MT-390-MX**

Head and Neck and Thoracic Region  
Musculature, W/ 2 Parts Brain, Deep  
Thoracic Region Open, Life Size, Total 3 Parts



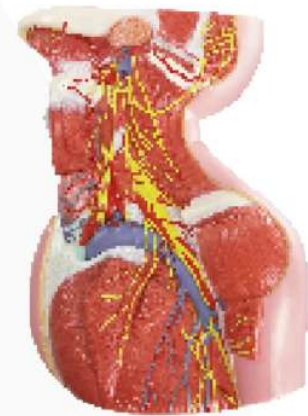
**MT-242H**

Neck Region Superficial Muscle Anatomical  
Model, Life Size



**MT-243H**

Neck Region Anatomical Model, Middle Layer,  
Life Size



**MT-244H**

Neck Region Anatomical Model, Deep Layer,  
Life Size



**MEDICAL-X**  
ADVANCING SIMULATION

## Eyes & Nervous System Models



**MT-2800**

Eye, 3x Life Size, 6 Parts



**MT-2790**

Eye, 5x Life Size, 8 Parts



**MT-2830**

Eye, 6x Life Size, 6 Parts



**MT-271N**

Cervical Vertebrae Model W/ Spinal Cord Model,  
2x Enlarged, 1 Part



**MT-275N**

2x Enlarged Thoracic Vertebrae Model W/  
Spinal Cord Model, 2x Enlarged, 1 Part



**MT-276N**

2x Enlarged Lumbar Vertebrae Model W/  
Spinal Cord Model, 2x Enlarged, 2 Part



**MT-273N**

Spinal Cord (10x Enlarged ) and Spinal Nerve (5x Enlarged ) , 2 Parts



**MEDICAL-X**  
ADVANCING SIMULATION

## Ear Models



**MT-288E**

Inner Ear, Auditory Ossicles and Tympanic Membrane, 10x Life Size, 2 Parts



**MT-286E**

Enlarged Model of Cochlea, 10x Life Size, 2 Part



**MT-284E**

Right Ear Structure Magnified Model, 3x Life Size, 3 Parts



**MT-285E**

Right Ear Structure Magnified Model, 3x Life Size, 5 Parts



**MT-287E**

Labyrinth of Inner Ear, 18x Life Size, 2 Parts



**MT-291E**

Auditory Ossicle, 30x Life Size, 1 Part





MEDICAL-X  
ADVANCING SIMULATION

## Dental & Teeth Pathology Models



MT-297G

Standard Dental Care Model, Life Size



MT-298G

Dental Model W/ Diseases, for Demonstration, Life Size



MT-293G

Dental Care Model W/ Toothbrush, 2x Life Size



MT-294G

Giant Dental Care Model W/ Enlarged Toothbrush, 3x Life Size



MT-304G

Teeth Caries Comparison Model, 6x Life Size



MT-305G

Endodontic Restoration Model



MT-307G

Decay Caries Development Model



MT-306G

Periodontitis Development Model



MEDICAL-X  
ADVANCING SIMULATION

## Dental & Teeth Pathology Models



MT-300G

Typodont Teeth Model W/32 Detachable Teeth  
For Practice W/ a Screw Driver



MT-302G

Dental Implant Model, for Demonstration,  
4x Life Size



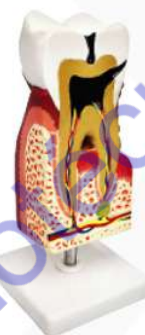
MT-301G

Teeth W/ Caries Development, 3 Stages,  
4x Life Size, 7 Parts



MT-296G

Teeth (Healthy / Pathologies) Model,  
Enlarged 4x



MT-295G

Lower Molar W/ Caries, 10x Life Size



MT-308G

Magnified Model of Dental Caries, 4x Life Size



MT-158D

Transparent Permanent Teeth Dentition Model



MT-306G

Transparent Pathological Teeth Dentition Model

# Respiratory System



**MT-315Q**

Transparent Heart, Life Size, 2 Parts



**MT-318Q**

Human Heart with Thymus Gland, Life Size, 3 Parts



**MT-323Q**

Human Mediastinum Model W/ Heart (2 Parts), Life Size, Total 6 Parts



**MT-337V**

Enlarged Laryngeal Cartilage Model, 2 Parts



**MT-336V**

Throat Model, Life Size, 2 Parts



**MT-326V**

Didactic Painted Lung Model Showing Pulmonary Segments, 2 Parts, Life Size

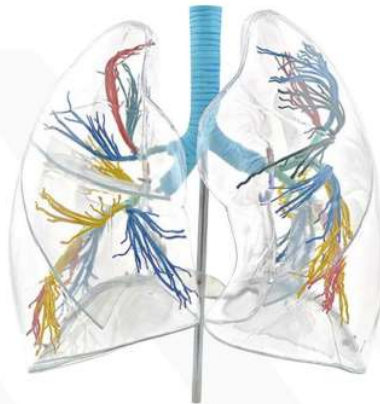


# Respiratory System



MT-335V

Pharyngeal Wall Model, Open to Show Interior Structure, Life Size, 1 Part



MT-329V

Bronchial Tree W/ Transparent Lungs, Life Size



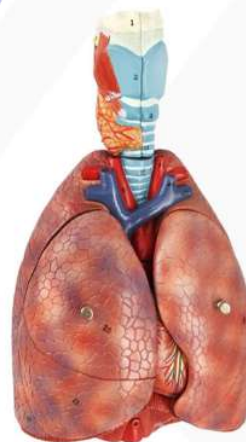
MT-327V

Left and Right Lungs, Life Size, 2 Parts



MT-328V

Lung Model Medially Cut, Life Size, 1 Part



MT-325V

Respiratory System Relief Model, Life Size, 7 Parts



# Digestive System



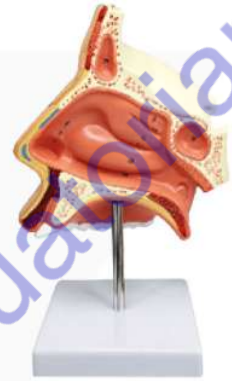
MT-338Z

Digestive System, Life Size, 2 Parts



MT-330V

Median Section of the Cavities of Nose,  
Mouth and Throat, Life Size, 1 Part



MT-331V

Nasal Cavity Anatomy Model, Natural Size



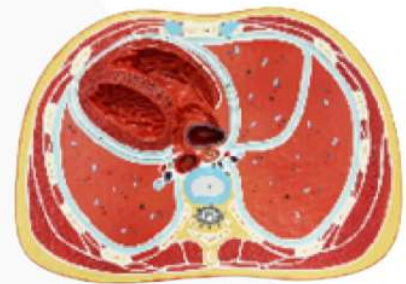
MT-342Z

Human Stomach, Life Size, 2 Parts



MT-344Z

Intestine Model, 1/2 Life Size, 2 Parts



MT-346Z

Schematic Cross Section Through Abdomen [T12],  
Life Size, 1 Part

# Urinary System



**MT-340Z**

Transparent Liver Model, Life Size



**MT-343Z**

Pancreas, Duodenum and Spleen, Life Size, 1 Part



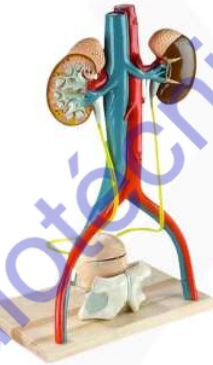
**MT-339Z**

Liver, Life Size, 1 Part



**MT-341Z**

Deluxe Liver Section W/ Gallbladder,  
1.5x Life Size



**MT-349X**

Free-Standing Urinary System, Life Size, 3 Parts



**MT-348X**

Urinary System Relief Anatomy Model, Life Size,  
1 Parts



**MT-351X**

Kidney W/ Adrenal Gland, Life Size, 2 Parts



**MT-354X**

Kidney W/ Adrenal Gland, 1.5x Life Size





**MEDICAL-X**  
ADVANCING SIMULATION

## Urinary System



**MT-353X**

Deluxe Free-Standing Kidney W/ Adrenal Gland, 3x Life Size



**MT-352X**

Deluxe Kidney W/ Adrenal Gland, 3x Life Size



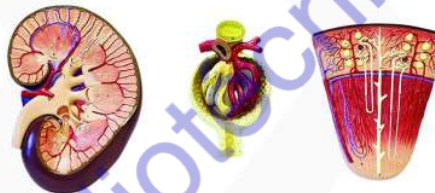
**MT-357X**

Kidney Section W/ Renal Nephron and Renal Corpuscle, Enlarged 1.5x, 60x, 350x Respectively



**MT-370I**

Testis, 10x Life Size, 1 Part



**MT-356X**

Kidney Section W/ Renal Nephron and Renal Corpuscle, 3 Parts



**MT-360X**

Urinary System Relief Anatomy Model, Life Size, 1 Parts



**MT-361X**

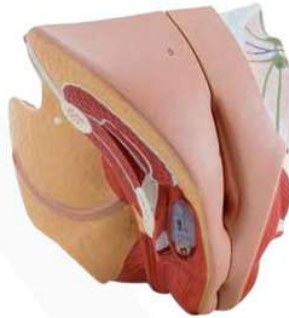
Male Urinary Bladder with Prostate, 2 Parts, 3x Life Size, 2 Parts, on Base & Stand

# Reproductive System



**MT-371I**

Sperm Development Model, 10000x Life Size, 5 Parts



**MT-373I**

Female Genital Organ, Life Size, 4 Part



**MT-375I**

New Internal Female Reproductive Organs



**MT-378-AX**

Ovarian Uterine Relief Model



**MT-368I**

Desktop Male Pelvis Section Model, W/ Additional Testis Tumor, 2 Parts



**MT-369I**

Male Perineum Model, Life Size, 1 Part



**MT-376I**

Female Perineum Model, Life Size, 1 Part



**MEDICAL-X**  
ADVANCING SIMULATION

## Pregnancy & Endocrine Models



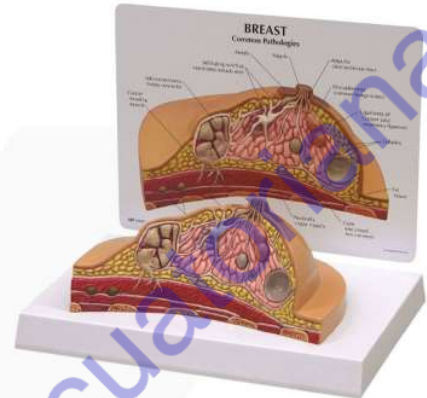
**MT-380-AX**

Human Embryo Approx 4 Weeks, Enlarged approximately 25 times



**MT-381-AX**

Pregnancy Pelvis W/ Mature Fetus, Life Size, 2 Parts



**MT-379-AX**

Breast Anatomy Model



**MT-382-AX**

Placenta Model W/ Removable Umbilical Cord, Life Size, 2 Parts



**MT-363J**

Organs of the Endocrine System, 7 Parts



**MT-364J**

Enlarged Model of Lymph Nodes



**MT-365J**

Pathological Model of the Pancreas, Spleen, and Duodenum, Life Size





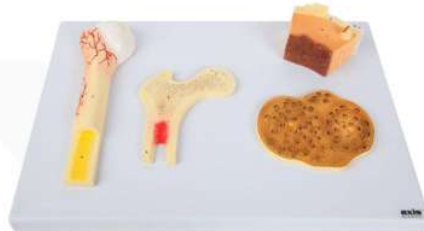
**MEDICAL-X**  
ADVANCING SIMULATION

## Microscopic Cellular Models



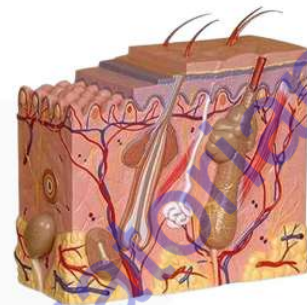
**MT-398-SK**

Human Blood Cells, Enlarged 2000 Times



**MT-399-SK**

Human Bone Microstructure W/ Long Bone Osteon, 4 Parts



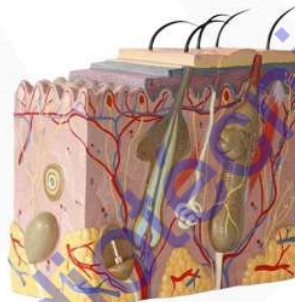
**MT-400-SK**

Skin Model, 70x Life Size



**MT-402-SK**

Skin Model, 35x Life Size



**MT-401-SK**

Skin Model, 50x Life Size



**MT-403-SK**

Cranial Layers Showing the Stratification of the Human Cranium



**MT-405-SK**

Animal cell model, magnified 20,000 times



**MT-406-SK**

Cell Mitosis Model, 8 Stages



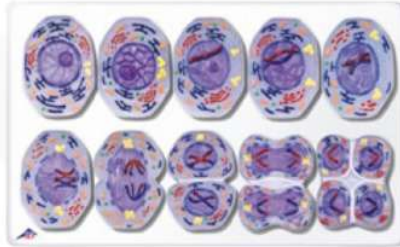
MEDICAL-X  
ADVANCING SIMULATION

## Microscopic Cellular Models



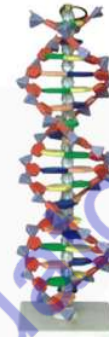
MT-407-SK

Cell Mitosis Model, 9 Parts



MT-408-SK

Cell Meiosis Model, 12 Parts



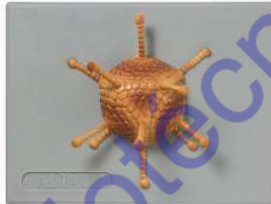
MT-409-SK

Double Helix DNA 24 BP Model 2 Turns



MT-410-SK

Rod-Shaped Bacteria Model



MT-411-SK

Adenovirus Model



MT-413-SK

AIDS Virus Model



MT-414-SK

Paramecium Model, 1800x Life Size, 2 Parts

## Plant Models



MT-415-SK

Plant Cell Model



MT-416-SK

Dicotyledonous Plants Stem Model,  
Enlarged About 120 Times



MT-417-SK

Leaf Construction Model



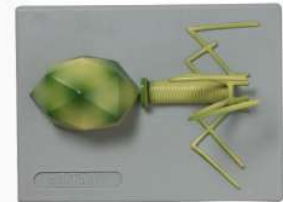
MT-418-SK

Hermaphrodite Dicot Flower,  
14X Peach Blossom, 8 Parts



MT-419-SK

Hermaphrodite Dicot Flower, 10X  
Peach Blossom, 5 Parts



MT-412-SK

Bacteriophage Model





**MEDICAL-X**  
ADVANCING SIMULATION

## Animal Skeleton Models



**MT-420-AN**

Cat Skeleton, About 60 cm Length



**MT-421-AN**

Dog Skeleton, Small Size About 60 cm



**MT-422-AN**

Large Dog Skeleton, About 100cm Size  
(Skull to Tail)



**MT-423-AN**

Dog Forelimb Model



**MT-424-AN**

Dog Hindlimb Model



**MT-425-AN**

Large Dog Skull Model W/ Wooden Base



**MT-426-AN**

Canine Pelvic skeleton Model



**MT-427-AN**

Canine Knee Joint Model



**MT-428-AN**

Canine Spine Model



**MEDICAL-X**  
ADVANCING SIMULATION

## Animal Skeleton Models



**MT-429-AN**

Canine Teeth Model



**MT-430-AN**

Transparent Canine Teeth Model



**MT-431-AN**

Cat Teeth Model



**MT-432-AN**

Transparent Cat Teeth Model



**MT-433-AN**

Fish Model, Life Size 5 Parts



**MT-434-AN**

Dog Ear Anatomical Model



**MT-435-AN**

Canine Skin Enlarged Model



**MT-427-AN**

Canine Knee Joint Model



# MEDICAL-X

Contact us



REPRESENTANTE PARA ECUADOR



**SOCIEDAD RADIOTÉCNICA  
ECUATORIANA**

[www.socradec.com](http://www.socradec.com)

[socradec@socradec.com](mailto:socradec@socradec.com)  
+593 2 225-2731

 @medicalx

 @MedicalXSimulators

 @medical-x

 /@lapxsimulator